



Ganesh Hemp

Budhanilkantha Kathmandu 44600

www.ganeshhemp.com

Fabric No- 01 Nettle 35% organic Cotton 65% color Fabric GSM 110 , wide 45 inch , USE- shirt, Trouser, Pant for men and women, Kurtha, Bed sheets and other fashion clothes (more color available)



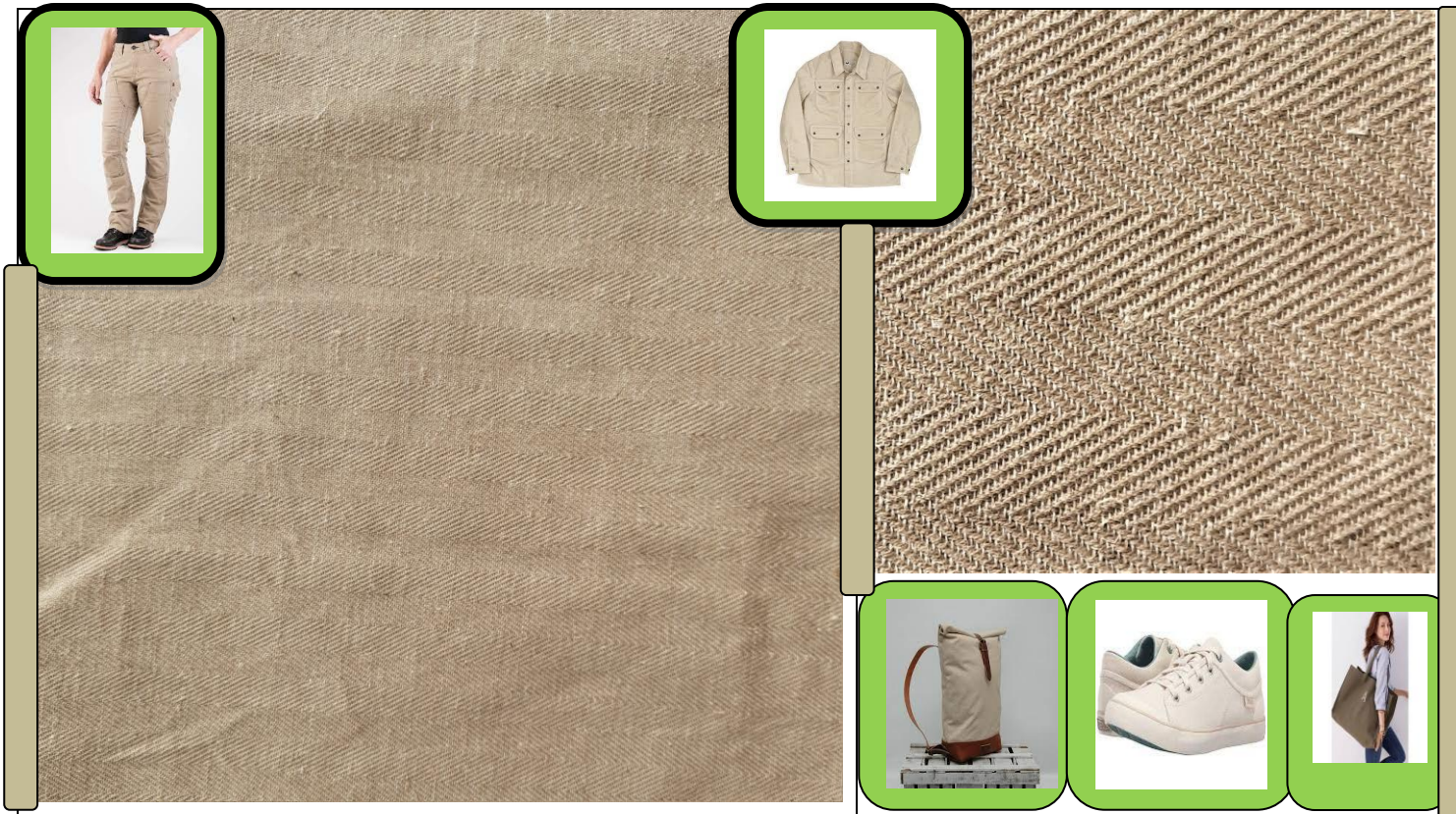
Fabric No- 02 Nettle 46 % organic Cotton 54% color Fabric GSM 350 , wide 60 to 70 inch , USE- shirt, Trouser, Pant for men and women, Kurtha, Bed sheets and other fashion clothes (more color available)



Fabric No- 03 Nettle46 % organic Cotton 54% color Fabric GSM 350 , wide 60 to 70 inch , USE- shirt, Trouser, Pant for men and women, Kurtha, Bed sheets and other fashion clothes (more color available)



Fabric No- 04 Nettle 46% organic Cotton 54% color Fabric GSM 350 , wide 45 inch , USE- shirt, Trouser, Pant for men and women, Kurtha, Bed sheets and other fashion clothes (more color available)



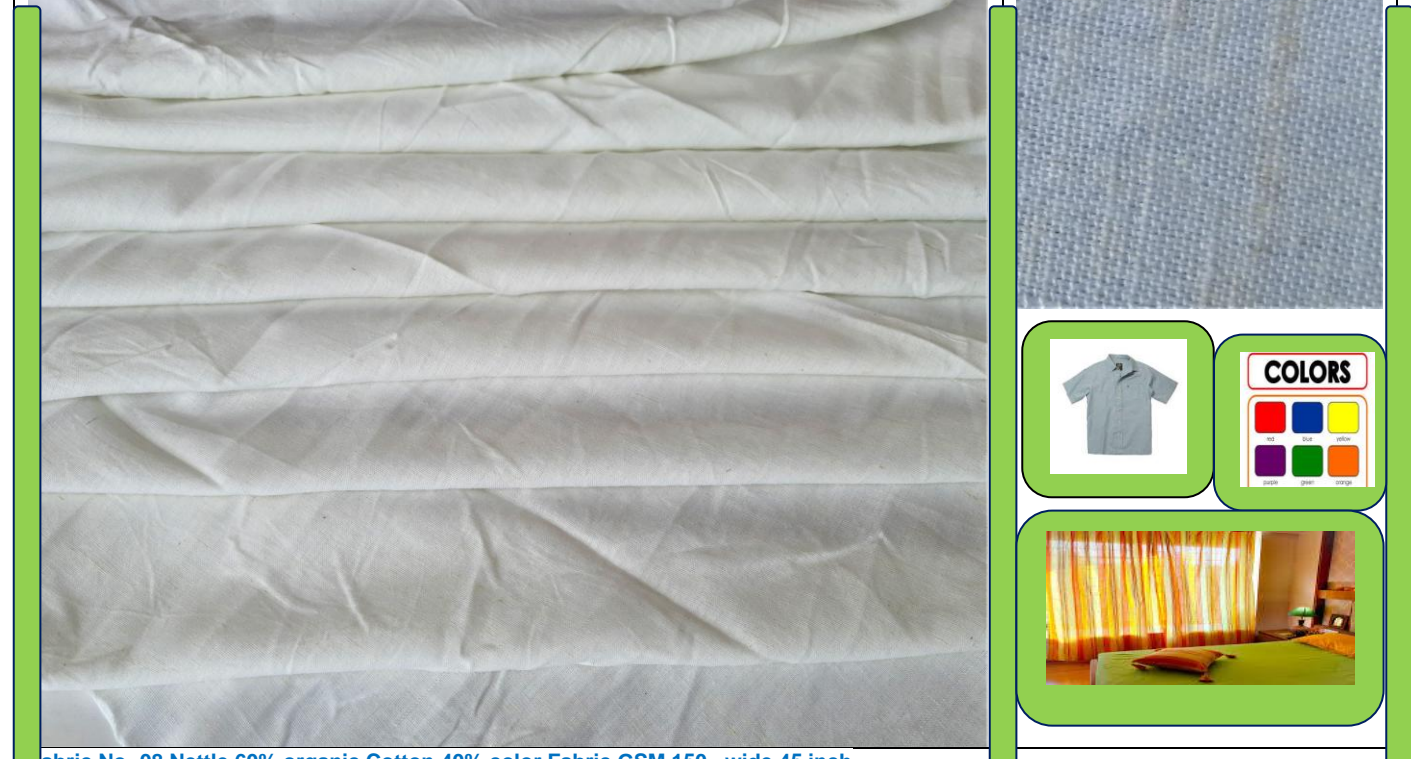
Fabric No- 05 Hemp 46% organic Cotton 54% color Fabric GSM 160 , wide 45 inch , USE- shirt, Trouser, Pant for men and women, Kurtha, Bed sheets and other fashion clothes (more color available)



Fabric No- 06 Nettle 35% organic Cotton 65% color Fabric GSM 120 , wide 45 inch , USE- shirt, Trouser, Pant for men and women, Kurtha, Bed sheets and other fashion clothes (more color available)



Fabric No- 07 Nettle 35% organic Cotton 65% color Fabric GSM 120 , wide 45 inch USE- shirt, Trouser, Pant for men and women, Kurtha, Bed sheets and other fashion clothes (more color available)

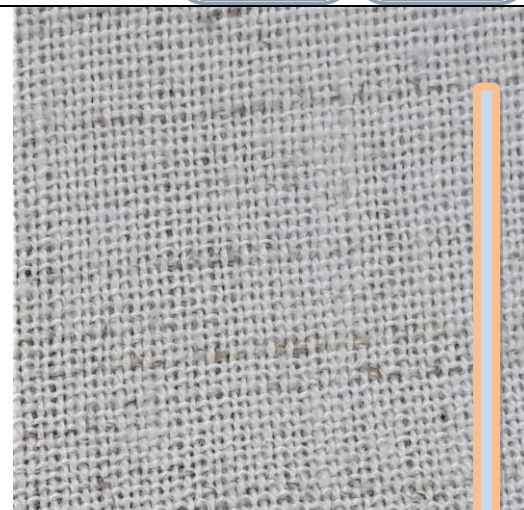


Fabric No- 08 Nettle 60% organic Cotton 40% color Fabric GSM 150 , wide 45 inch

USE- shirt, Trouser, Pant for men and women, Kurtha, Bed sheets and other fashion clothes(more color available)



Fabric No- 09 Nettle 46% organic Cotton 54% color Fabric GSM 150 , wide 45 inch , USE- shirt, Trouser, Pant for men and women, Kurtha, Bed sheets and other fashion clothes (more color available)



Fabric No- 10 Nettle 50% organic Cotton 50% color Fabric GSM 150, wide 45 inch

USE- shirt, Trouser, Pant for men and women, Kurtha, Bed sheets and other fashion clothes(more color available)



Fabric No- 11 Nettle 35% organic Cotton 65% color Fabric GSM 130 , wide 45 inch ,

USE- shirt, Trouser, Pant for men and women, Kurtha, Bed sheets and other fashion clothes(more color available)



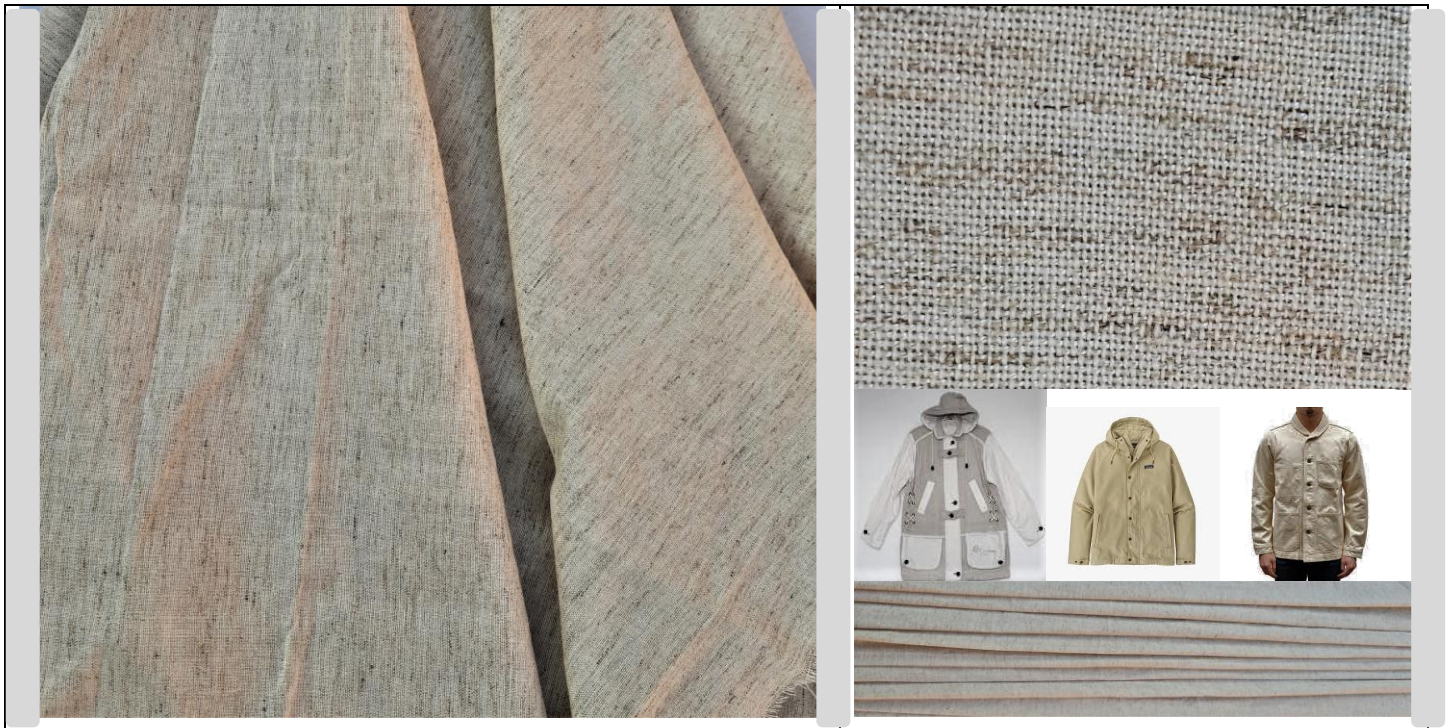
Fabric No- 12 Nettle 46% organic Cotton 54% color Fabric GSM 140 , wide 45 inch , USE- shirt, Trouser, Pant man and woman, Kurtha, Bed sheets, other faction cloths



Fabric No- 13 Nettle 46% organic Cotton 54% color Fabric GSM 280, wide 60 to 70 inch , USE- shirt, Trouser, Pant formen and women, Kurtha, bed shoes sandals and other fashion clothes



Fabric No- 14 Nettle 60% organic Cotton 40% color Fabric GSM 160 , wide 45 inch , USE- shirt, Trouser, Pant man and woman, Kurtha, Bag, coat, heavy coat jacket and other fashion clothes



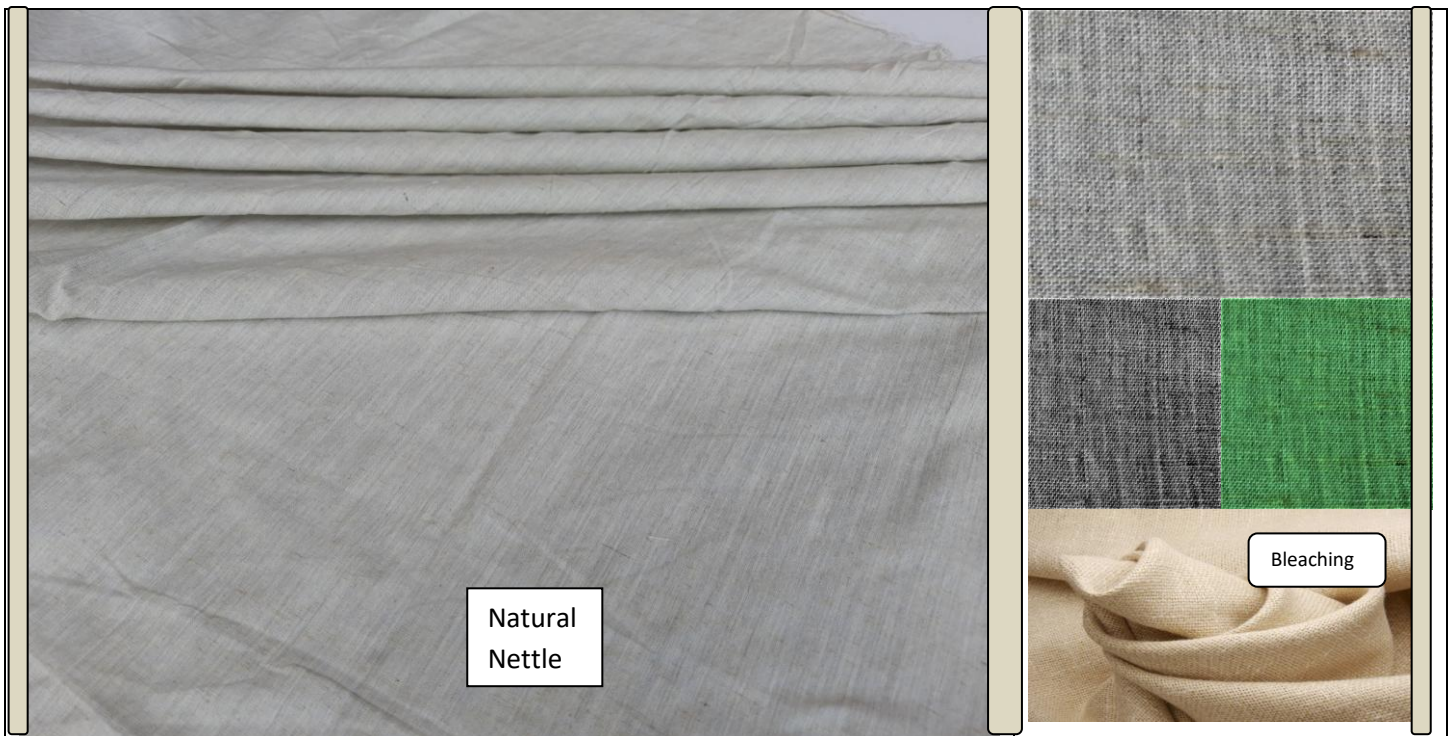
Fabric No- 15 Nettle 46% organic Cotton 54% color Fabric GSM 340 , wide 60 to 70 inch , USE- shirt, Trouser, Pant man and woman, jacket, coat and other fashion clothes



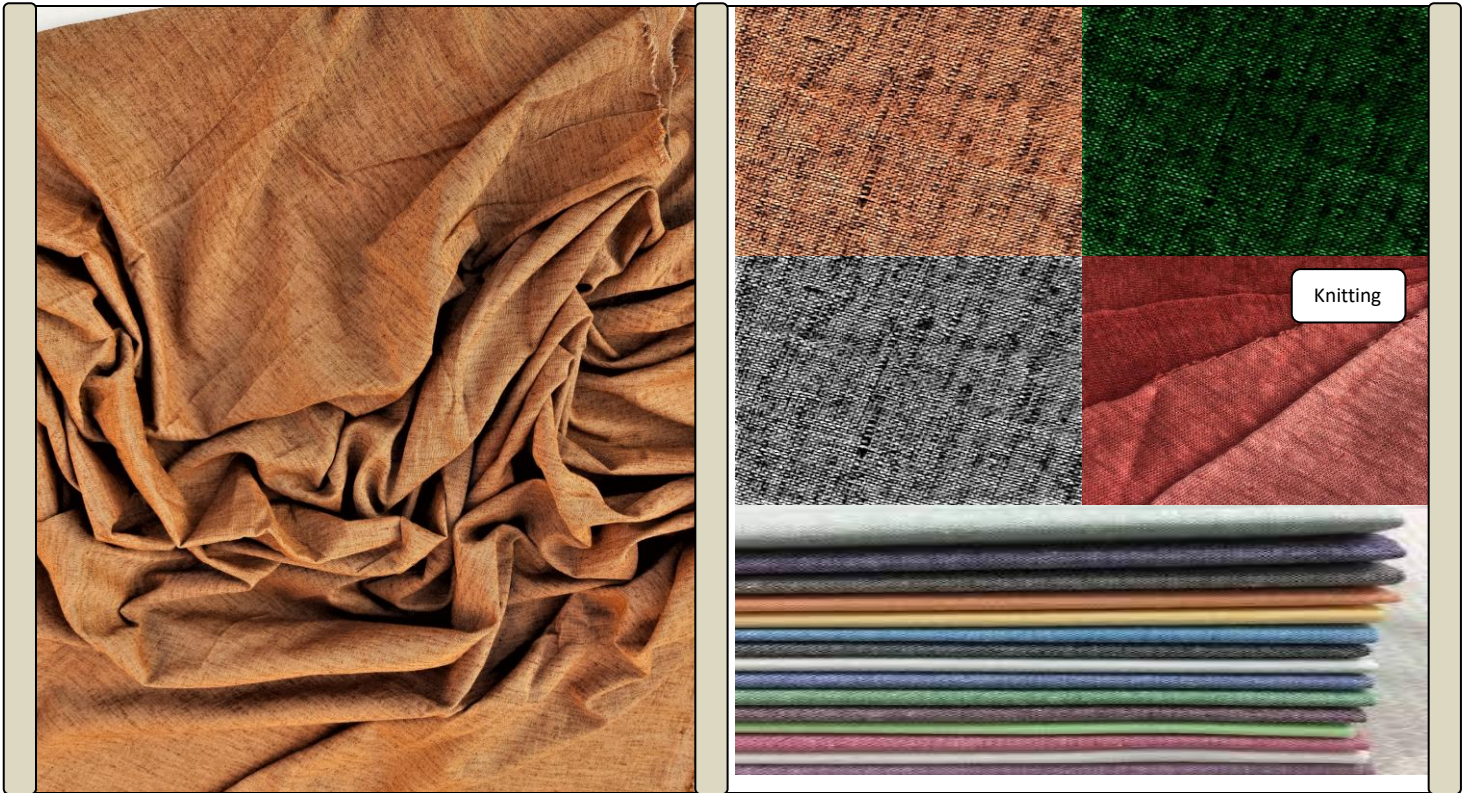
Fabric No- 16 Nettle 50% organic Cotton 50% color Fabric GSM 160 , wide 45 inch , USE- shirt, Trouser, Pant man and woman, Kurtha, coat and other fashion clothes



Fabric No- 17 Nettle 35% organic Cotton 65% color Fabric GSM 130 , wide 45 inch , USE- shirt, Trouser, Pant man and woman, Kurtha, Bed sheets and other fashion clothes



Fabric No- 18 Nettle 60% organic Cotton 40% color Fabric GSM 120 , wide 45 inch , USE- shirt, Trouser, Pant man and woman, Kurtha, Bed sheets and other fashion clothes



Fabric No- 19 Nettle 46% organic Cotton 54% color Fabric GSM 330 , wide 60 to 70 inch , USE- shirt, Trouser, Pant man and woman, coat jacket shoes sandals and other fashion clothes



Note-The purchase order must be given at least 200 meters and a production time of 30 days Thank you

For more information, call us at: +977 (9851154220)